

MATERIALI DA UTILIZZARE

- CALCESTRUZZO PER SOTTOFONDAZIONI:	C12/15
- CALCESTRUZZO PER PLATEE E PARETI:	C32/40
- CLASSE DI ESPOSIZIONE:	XA2 + XC4
- SLUMP:	S4
- DIAMETRO MAX INERTI:	32 mm
- FERRO PER CEMENTO ARMATO:	B450C

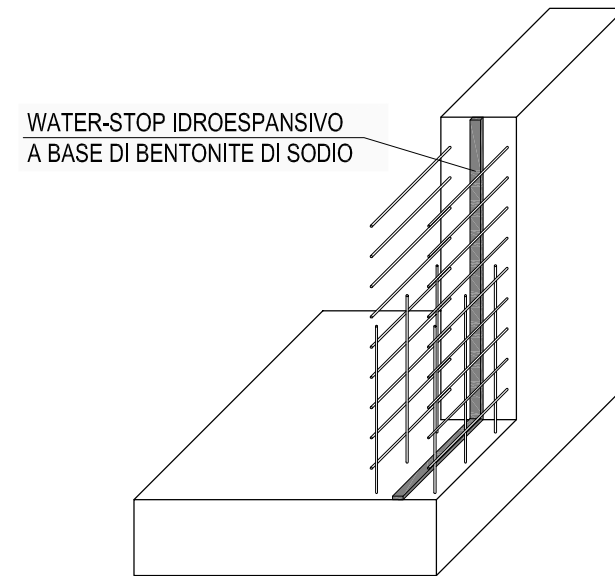
PRESCRIZIONI

- COPRIFERRO:	3,0 cm
- SOVRAPPOSIZIONE MINIMA DA RISPETTARE:	50Ø
- LE ARMATURE DOVRANNO RISULTARE ELETTRICAMENTE CONTINUE	

PRESCRIZIONI PARTICOLARI

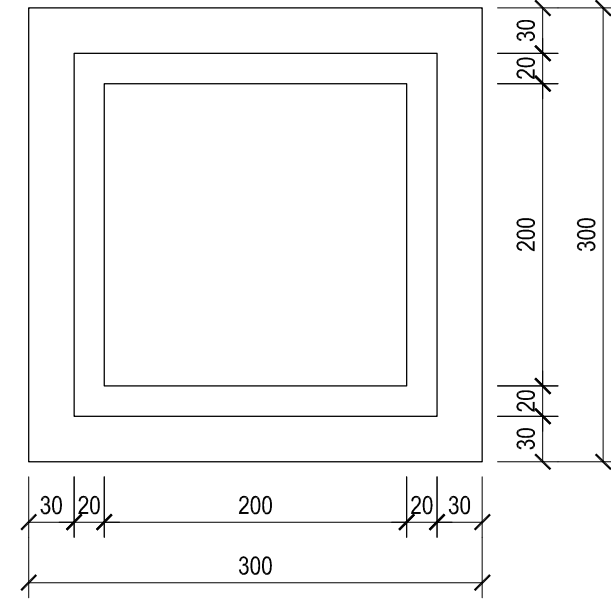
- Le riprese di getto dovranno essere realizzate applicando, prima del secondo getto, un giunto WATER-STOP, applicando sulla superficie del getto precedente un profilo estraibile idroespansivo per la tenuta idraulica dei giunti di ripresa del tipo Sika Swell S-2 (VP) o similare; tale profilo potrà essere estruso in opera mediante le comuni pistole per sigillanti professionali.

GIUNTO DI RIPRESA



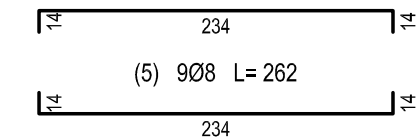
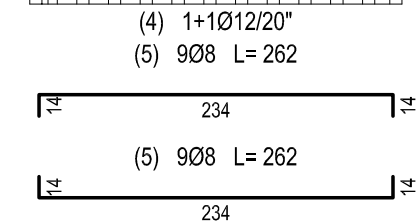
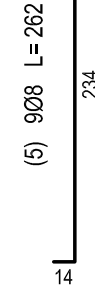
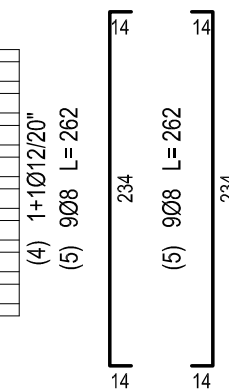
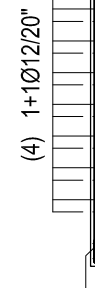
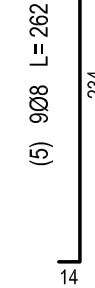
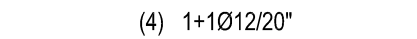
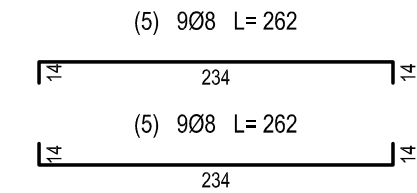
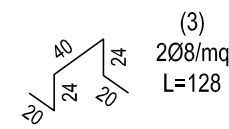
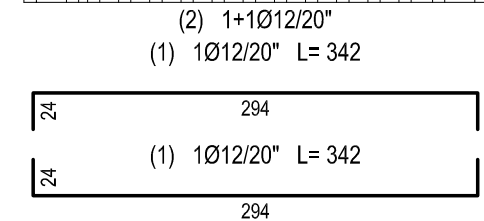
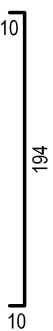
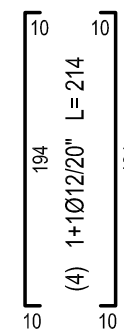
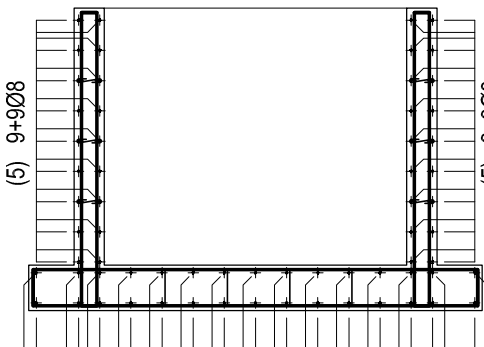
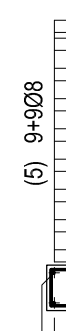
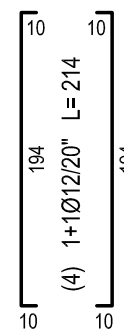
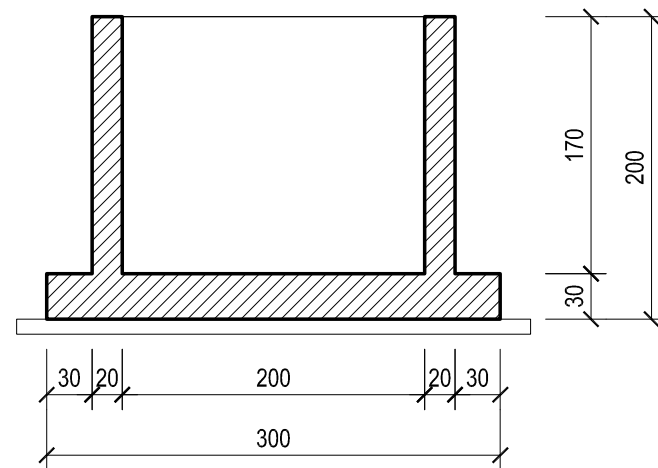
PIANTA

SCALA 1:50



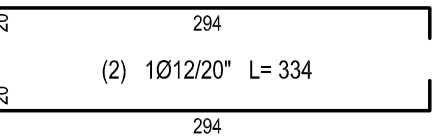
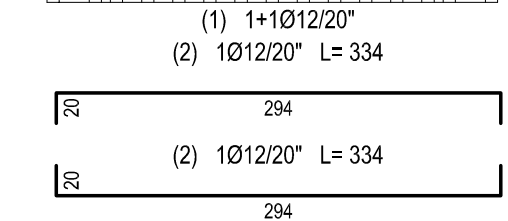
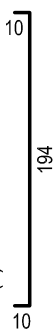
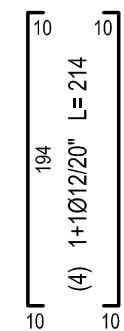
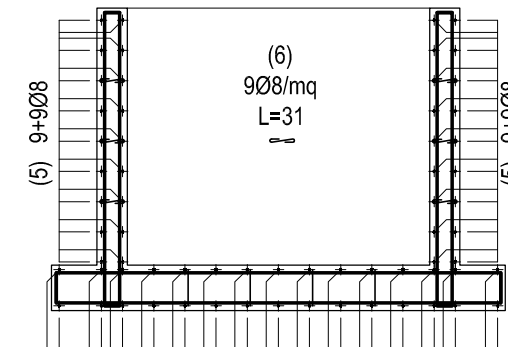
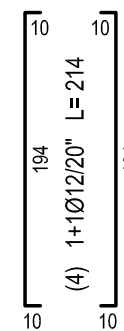
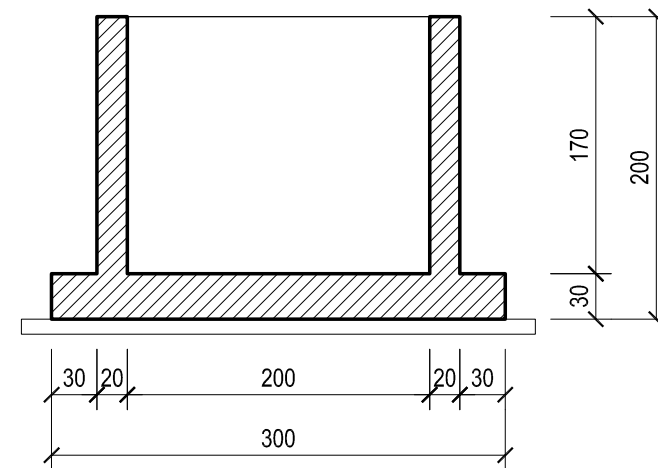
SEZIONE A-A

SCALA 1:50



SEZIONE B-B

SCALA 1:50



ARMATURA (ml)					
Pos.	u.m.	Ø (mm)	L (m)	n.	Peso tot. Kg
1	m	12	3,42	30	91,11
2	m	12	3,34	30	88,98
3	m	8	1,28	18	9,08
4	m	12	2,14	88	167,23
5	m	8	2,62	72	74,32
6	m	8	0,31	122	14,90
TOTALE (kg)					445,62

VOLUME (mc)			
A (m)	B (m)	H (m)	Totale
3,00	3,00	0,30	2,70
2,40	1,70	0,20	0,82
2,40	1,70	0,20	0,82
2,00	1,70	0,20	0,68
2,00	1,70	0,20	0,68
TOTALE (mc)			5,70
INCIDENZA (kg/mc)			78,18



Comune di Trani

Regione Puglia



OPERE DI MESSA IN SICUREZZA DEI LOTTI I, II, III DISCARICA PER RSU SITA IN TRANI E DENOMINATA "PURO VECCHIO"

CIG: 7060424E30

PROGETTO ESECUTIVO

COMMITTENTE:

AZIENDA MUNICIPALIZZATA IGIENE URBANA
Comune di Trani
Via Barletta, 161 - Trani
P.IVA 05487980723



PROGETTO:

Studio Romanazzi-Boscia e Associati s.r.l.
Via Amendola 172/c, 70100 Bari - Tel.: 080.548.21.87 - Fax: 080.548.22.21
Prof. Ing. Eligio ROMANAZZI
Dott. Ing. Giovanni F. BOSCIA
Dott. Ing. Sebanino GIOTTA
Dott. Ing. Fabio PACCAPELO

Ing. Federico Cangialosi

Ing. Gianluca Intini

Dott. geol. Vito Specchio

Dott. Vincenzo Catalucci



ALLEGATO

EG.4.3.2

EG.4 - RACCOLTA E SMALTIMENTO ACQUE METEORICHE
III LOTTO - POZZETTO DI SOLLEVAMENTO
CARPENTERIA E ARMATURA

SCALA:

1 : 50

DATA: Aprile 2018

AGGIORNAMENTO	DATA	DESCRIZIONE